

WELCOME TO **NEXUS**





ABOUT NEXUS

Located in the heart of Expo City Dubai, Nexus is a beautiful contemporary space with seven bright, equipped and inviting spaces. The venue offers a ready-made platform for every type of event, from conferences, panels, and workshops to smaller, more intimate gatherings. Unwind on the leafy Garden Terrace or host high level hybrid talks in the state-of-the-art Nexus Hub.

Nexus has already hosted more than 200 events, including COP28 and Expo 2020 Dubai, welcoming heads of state and international organisations, business leaders and entrepreneurs, academics, advocates, innovators, poets, artists and more.

Now we're ready to host you.

EXPLORE OUR SPACES



THE HUB

The multipurpose auditorium is a versatile space designed with state-of-the-art audio-visual technology. Ideal for conferences, seminars, workshops, film screenings, and networking events. A true Hub for creativity and collaboration. Ample natural light and modern amenities enhance the experience, ensuring that every event leaves a lasting impression.



Multi-Purpose Space

Indoor Auditorium



Max Capacity

250



Specs

363sqm

TECHNICAL SPECIFICATIONS

AV EQUIPMENT	
Video	LED Screen (P2.5 Indoor, 4.48m x 2.40m, 1792 x 960 pixels, 1600 NIT Brightness) 2 x 43" Stage comfort monitor (With black hide) 2 x 5" Ceiling mounted relay monitor (w/ independent content options) 2 x 65" Side screen relay monitor (w/independent content options)
Audio	2 x Ceiling mounted Subwoofer 2 x Ceiling mounted stage monitor 8 x Ceiling mounted point source speaker
Cameras	4 x Ceiling mounted PTZ Camera
Lighting	4 x Source four lighting fixture 2 x Par Cans stage lighting
FOH AV equipment	1 x Atem Mini Extreme Video Switcher 5 x Lenovo Laptop 2 x HP Elitebook Presentation Laptop 2 x Control Laptop 3 x Apple Control IPAD 1 x Midas M32R Audio Console 1 x 512DMX Controller 10 x wireless handheld microphone 10 x wireless beltpack 10 x headset Mics 4 x wireless comms 6 x wired comms AV Rack with all the processor, network and relay control

EXPLORE OUR SPACES



CONFERENCE ROOM

This versatile room is ideal for small meetings, brainstorming sessions, and client presentations. With advanced AV equipment, it adapts to various professional needs, fostering collaboration and creativity in a focused environment.



Multi-Purpose Space

Indoor



Max Capacity

10



Specs

26sqm

TECHNICAL SPECIFICATIONS

VENUE SPECS

Conference table
(1 x Size L 600 x W 160 x H75)

Executive chairs (x10)

AVAILABLE ASSETS FOR HIRE

TV screen 89 inches

Clickshare for wireless presentation

(AI virtual platforms)
WebEx, Microsoft Teams, Zoom

Wi-Fi

Lenovo Mini PC w/ Logitech Rally
Plus, video conferencing kit
for virtual/hybrid meetings

WALL
ART



EXPLORE OUR SPACES



LEADERS LOUNGE

This stylish and comfortable space is the perfect setting for strategic meetings or small breakout discussions. With modern furnishings, the lounge serves as a destination for leaders to connect and share ideas. The relaxed atmosphere encourages open dialogue, ensuring that every conversation is impactful.



Multi-Purpose Space

Indoor



Max Capacity

10



Specs

32sqm

EXPLORE OUR SPACES



EVENT LOUNGE

The Event Lounge is a vibrant and adaptable space with an open layout, making it ideal for product launches, workshops, and celebrations. Ambient lighting creates a welcoming atmosphere for social events and community functions. Whether for casual meet-ups or more structured activities, the Events Lounge offers a dynamic setting for memorable experiences.



Multi-Purpose Space

Indoor



Max Capacity

75



Specs

115sqm

EXPLORE OUR SPACES



GARDEN TERRACE

The Garden Terrace is a charming outdoor space with beautiful landscaping and a serene atmosphere. The terrace can accommodate seating for dining, as well as casual lounge areas for relaxation and conversation. The Garden Terrace offers a delightful setting for corporate events, networking functions and unique social gatherings.



Multi-Purpose Space

Outdoor



Max Capacity

65



Specs

50sqm

EXPLORE OUR SPACES



SUNSET TERRACE

The Garden Terrace is a charming outdoor space with beautiful landscaping and a serene atmosphere. The terrace can accommodate seating for dining, as well as casual lounge areas for relaxation and conversation. The Garden Terrace offers a delightful setting for corporate events, networking functions and unique social gatherings.



Multi-Purpose Space

Outdoor



Max Capacity

65



Specs

50sqm

Our Services



EVENT MANAGEMENT

Our expert event management team is committed to delivering exceptional experiences tailored to your needs. From meticulous planning to flawless execution, we ensure every detail is handled with precision. Trust us to transform your vision into a successful and memorable event.



CULINARY SERVICES

Exquisite catering creates unforgettable events. We deliver memorable experiences, one delicious bite at a time. Whether for intimate gatherings or grand galas, elevate your occasion with our culinary options.



AUDIO VISUAL AND PRODUCTION

Enhance your events with our AV expertise. Transform your occasion with seamless audio-visual solutions. Our in-house team merges venue knowledge with technical skill to create the ideal atmosphere, offering comprehensive technical support. Let us bring your vision to life.



IT AND BROADCASTING

Enjoy seamless event technology with innovative translation systems and broadcasting options. Our expert IT team is here to provide support and ensure smooth connectivity and IT services for every event.



VENUE BRANDING

Unlock your brand's potential at Nexus. Whether you're hosting an event or seeking a robust marketing platform, we help you shine with our 7 LED screens strategically placed throughout the venue.



VENUE PRESENTATION

Experience ultimate comfort and peace of mind with our dedicated venue presentation team. Enjoy your event knowing that our thorough cleaning and sanitization services prioritize the comfort and well-being of all your guests.

Plan Your Visit

TRAVELLING BY CAR

Nexus is located near Expo Road (E77), accessible from Sheikh Mohammed bin Zayed Road (E311) and Sheikh Zayed bin Hamdan al Nahyan Street (D54).

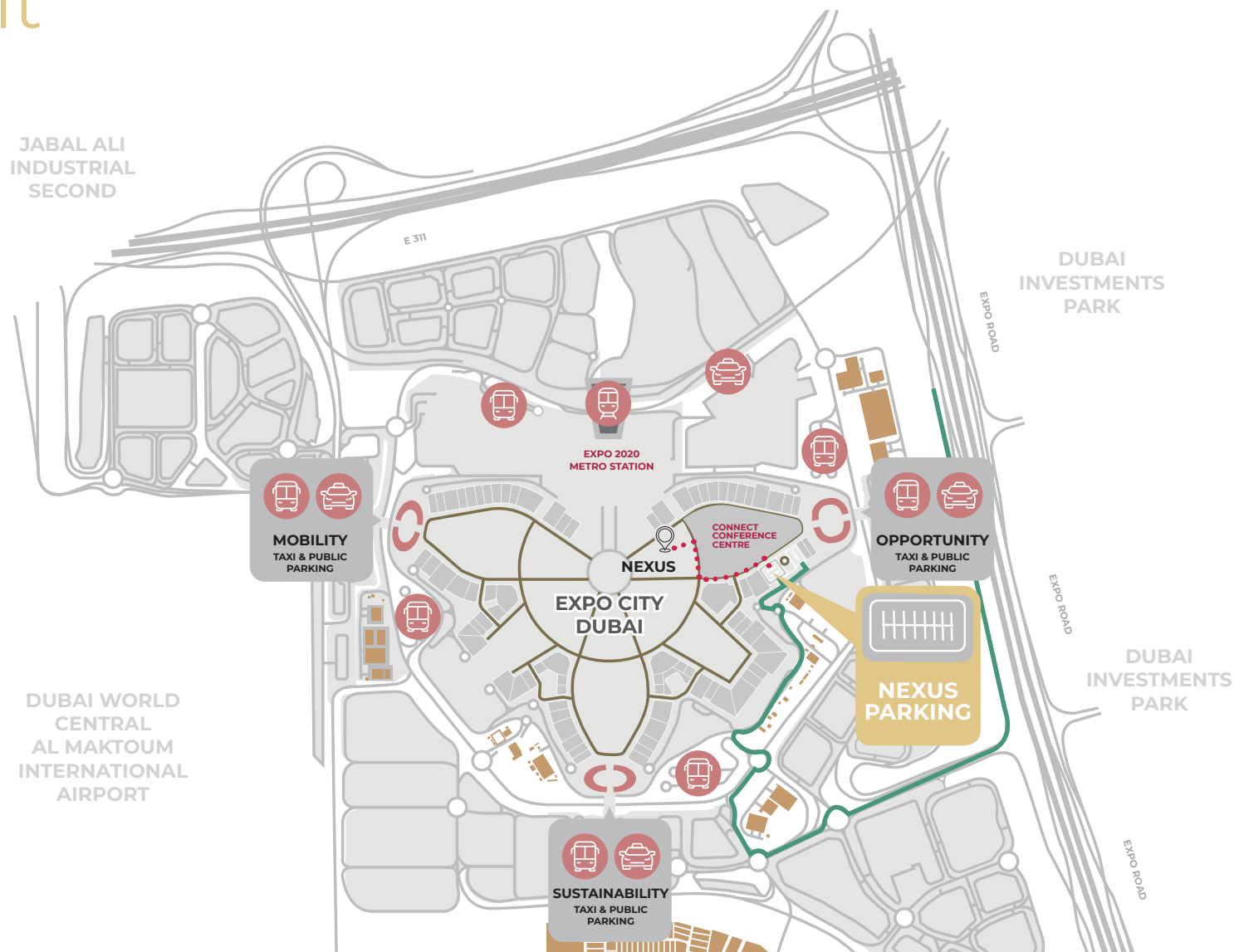


SCAN QR CODE
FOR NEAREST PARKING

TRAVELING BY METRO

The Dubai Metro Red Line offers fast, reliable, and easily accessible transportation with several routes to the Expo 2020 station.


Complementary buggy services are available to Nexus.



Contact us

Get in touch with us today and book your next event at Nexus. Our event experts are ready to support you in creating an extraordinary experience.

General Inquiries & Bookings

 eventsales@c3expocitydubai.com
www.c3expocitydubai.com

Follow us

 Connect Conference Centre

 @c3.dubai

NEXUS

PROUDLY
MANAGED BY

